



Willem Hofker, *Pura Campuhan (Campuhan Temple)*, 1940, 49 x 31 cm



Emiria Sunassa, *Gadis Bali di Pintu Batu* (Balinese Girl at the Stone Gate), 1941-

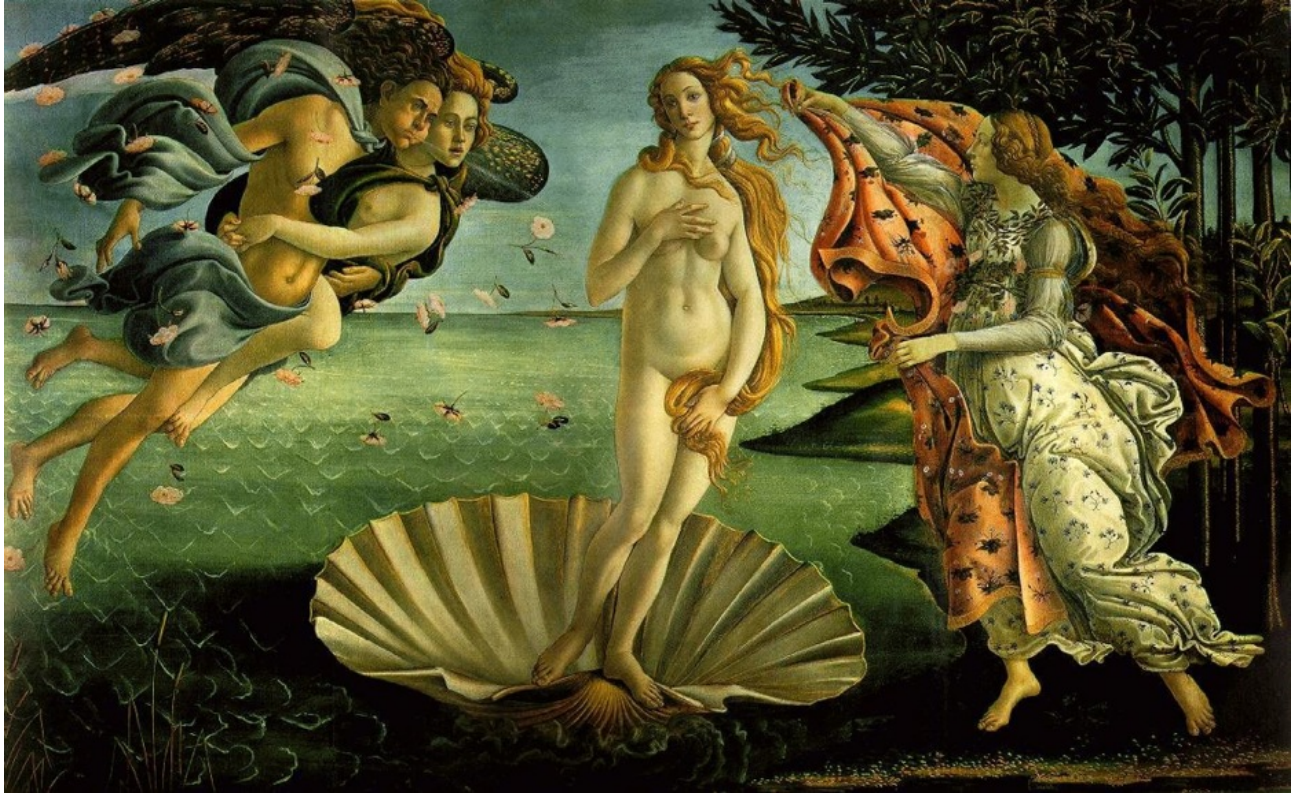


Figure 1. Sandro Botticelli, *The Birth of Venus*, 1486



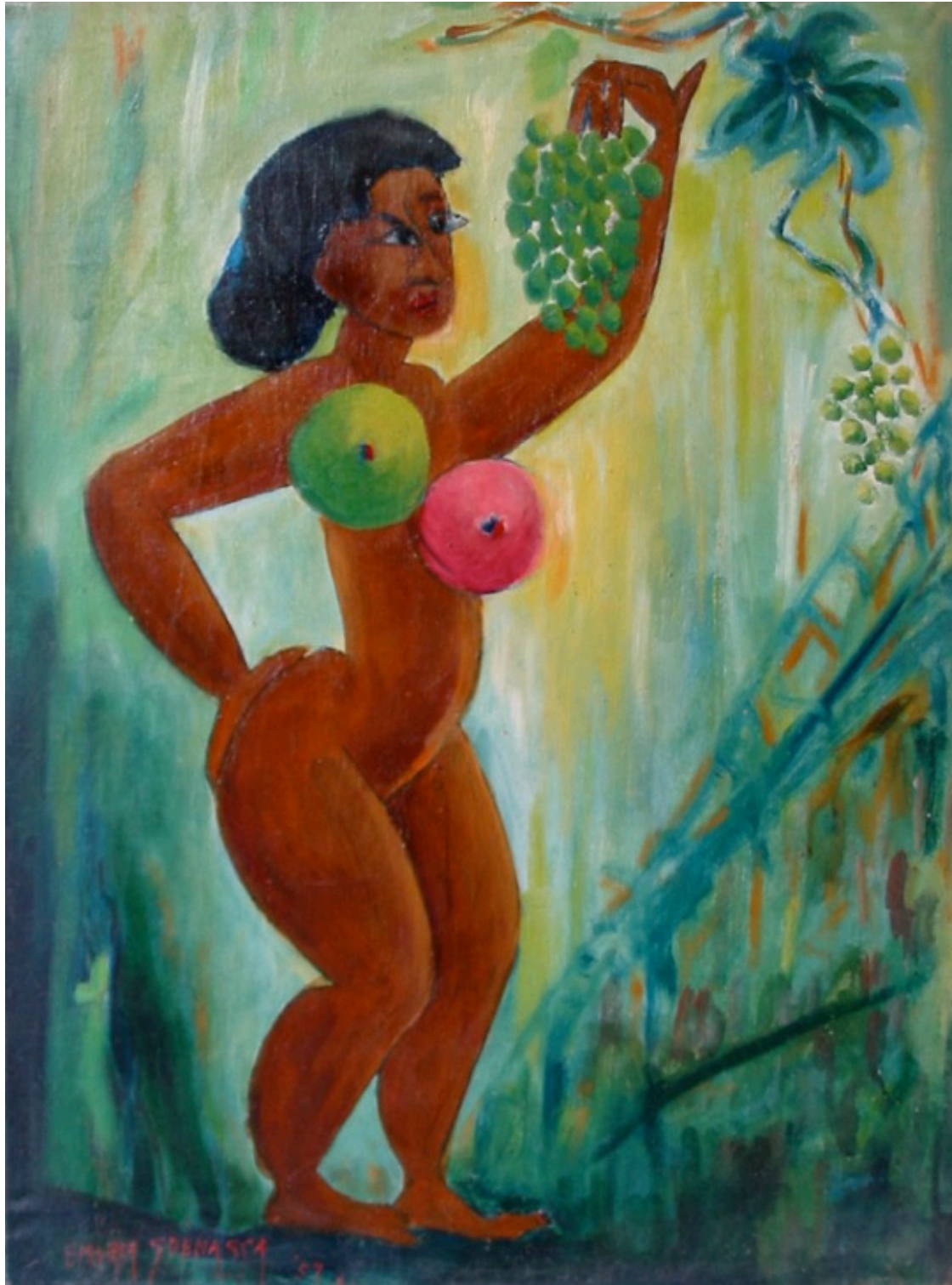
Emiria Sunassa, *Mutiara Bermain*, date unknown, when photographed, collection of Ade Waworuntu



Emiria Sunassa, *Nogati Menunggu Siapa?* (For Whom is Nogati Waiting?), 1941



Emiria Sunassa, *Bronwaterbad (Spring water Bath)*, 1957, 68 x 51cm



Emiria Sunassa, *Forbidden Fruit*, 1957, 68 x 51cm



Emiria Sunassa, *Devotion*, 1957, 68 x 51cm